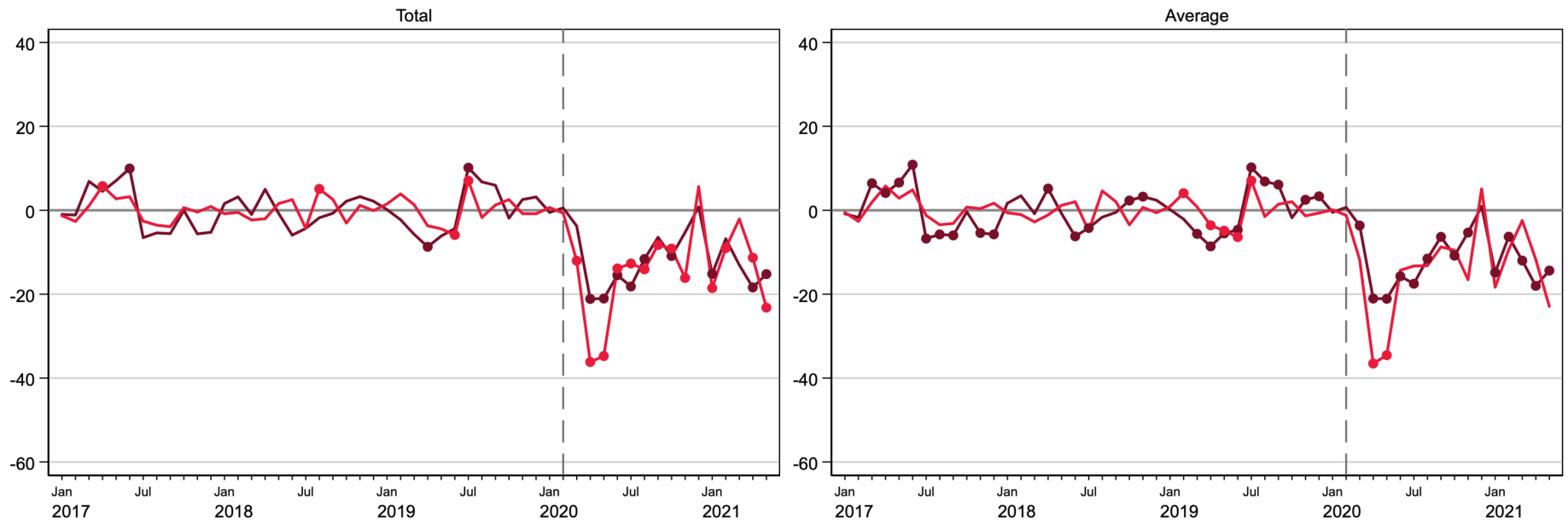
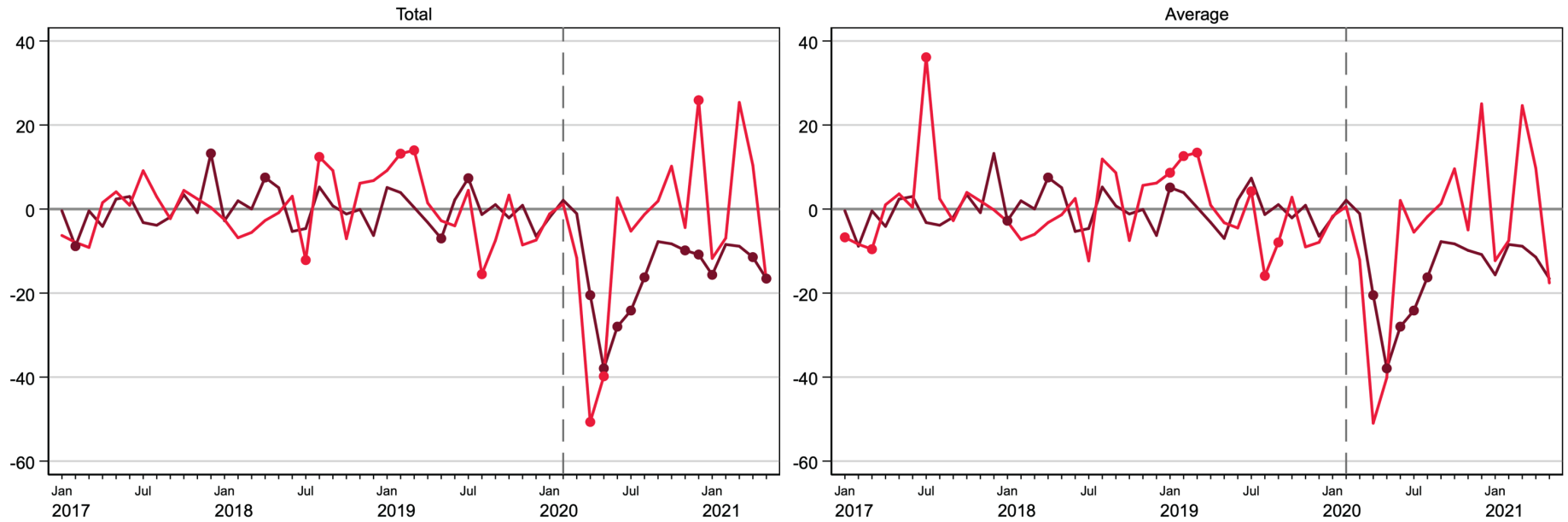


Figure S1. COVID effects: Percent difference gap between reported and predicted levels for outpatient attendance during 2017-2021
National



Kampala Metropolitan Area

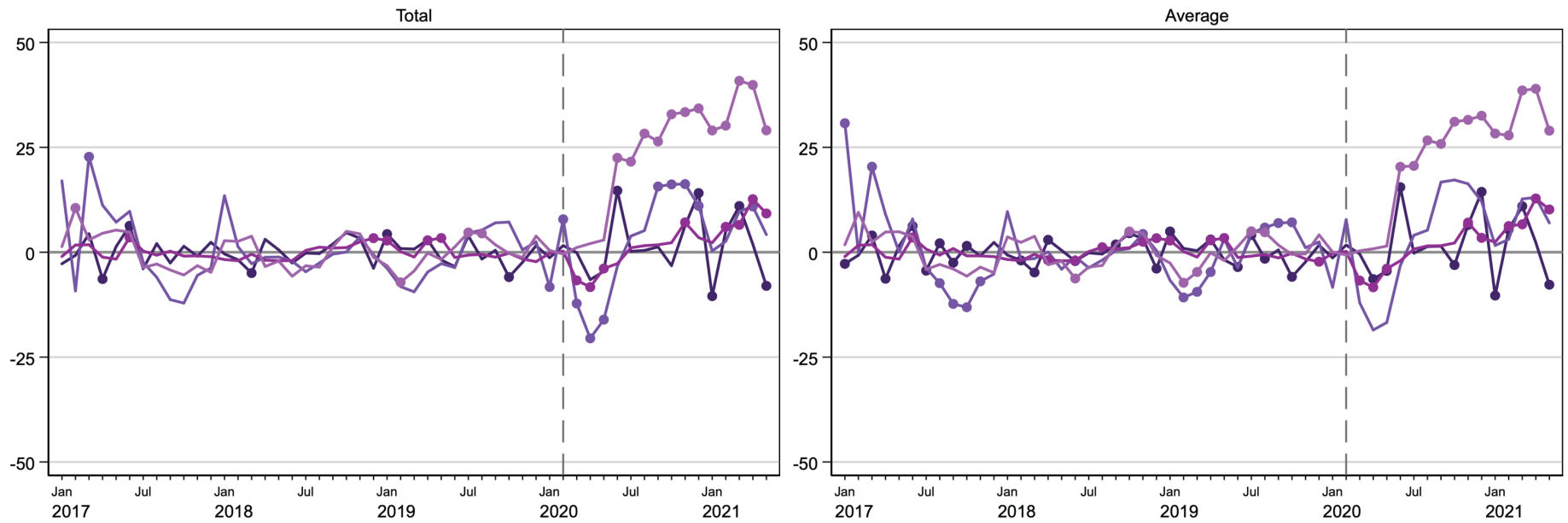


— New attendances — Reattendances

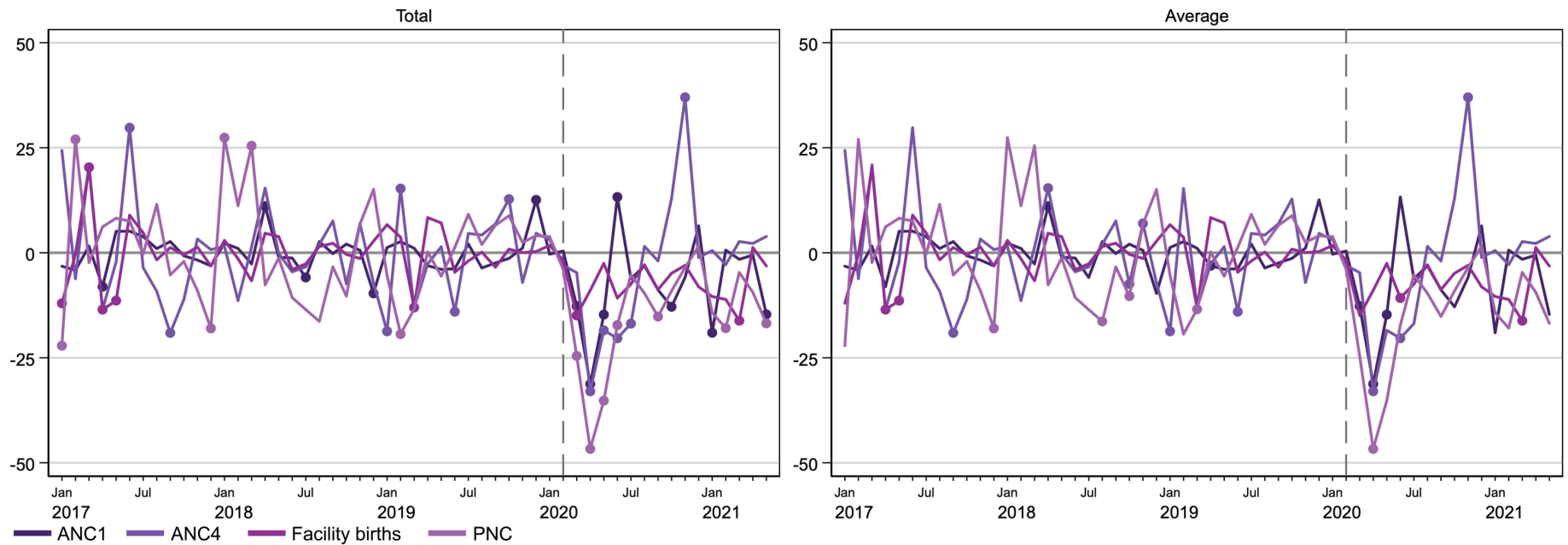
Solid circles in the graphs indicate months where the observed value is significantly different from the predicted value at $p < 0.05$.

Kampala Metropolitan Area contains the following districts: Buikwe, Kampala, Luweero, Mpigi, Mukono, and Wakiso.

Figure S2. COVID effects: Percent difference gap between reported and predicted levels for maternal and infant health services during 2017-2021
National



Kampala Metropolitan Area

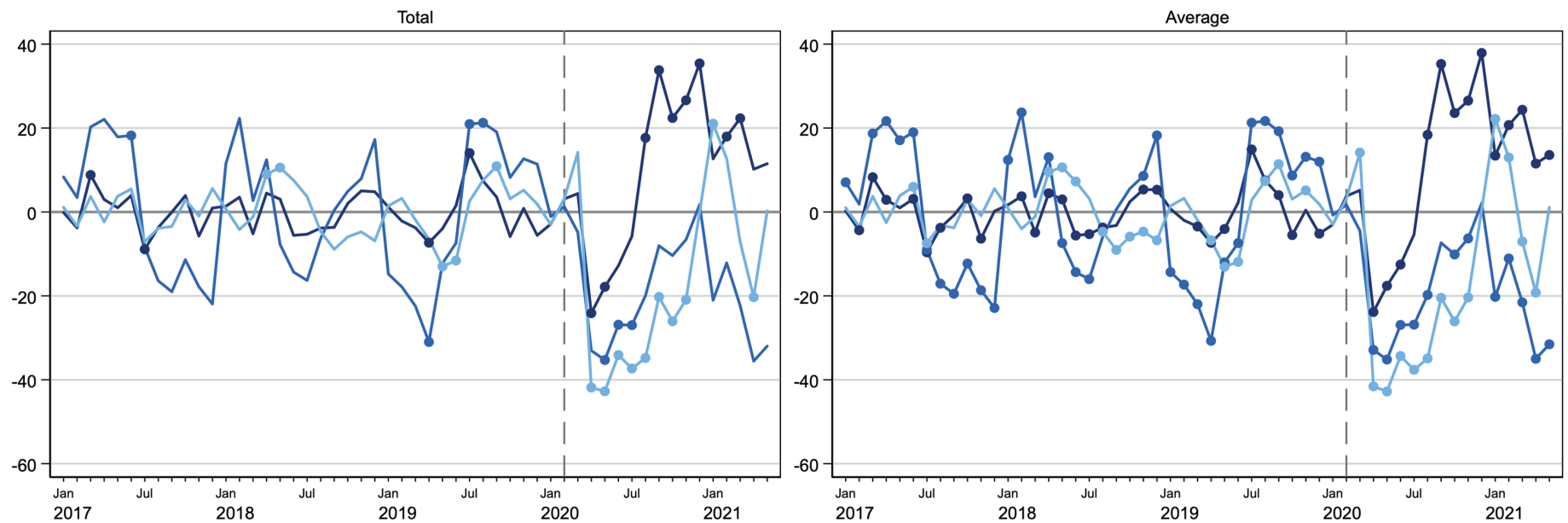


Solid circles in the graphs indicate months where the observed value is significantly different from the predicted value at $p < 0.05$.

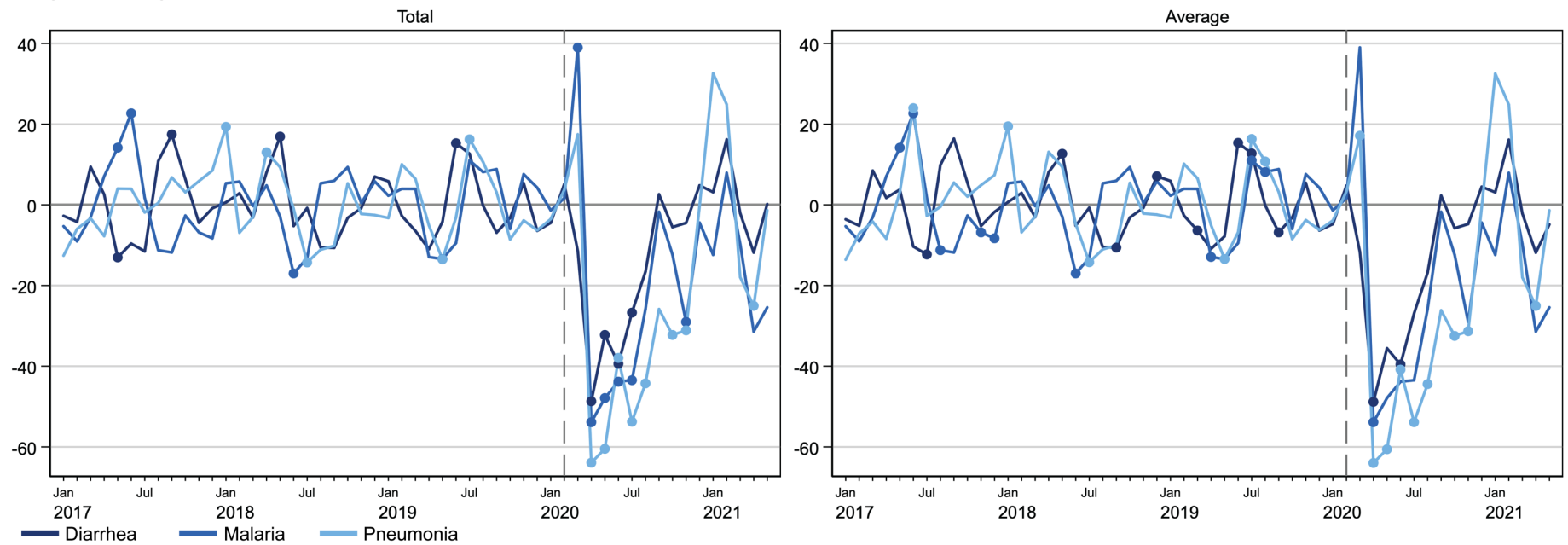
Kampala Metropolitan Area contains the following districts: Buikwe, Kampala, Luweero, Mpigi, Mukono, and Wakiso.

Figure S3. COVID effects: Percent difference gap between reported and predicted levels for young child illness cases during 2017-2021

National



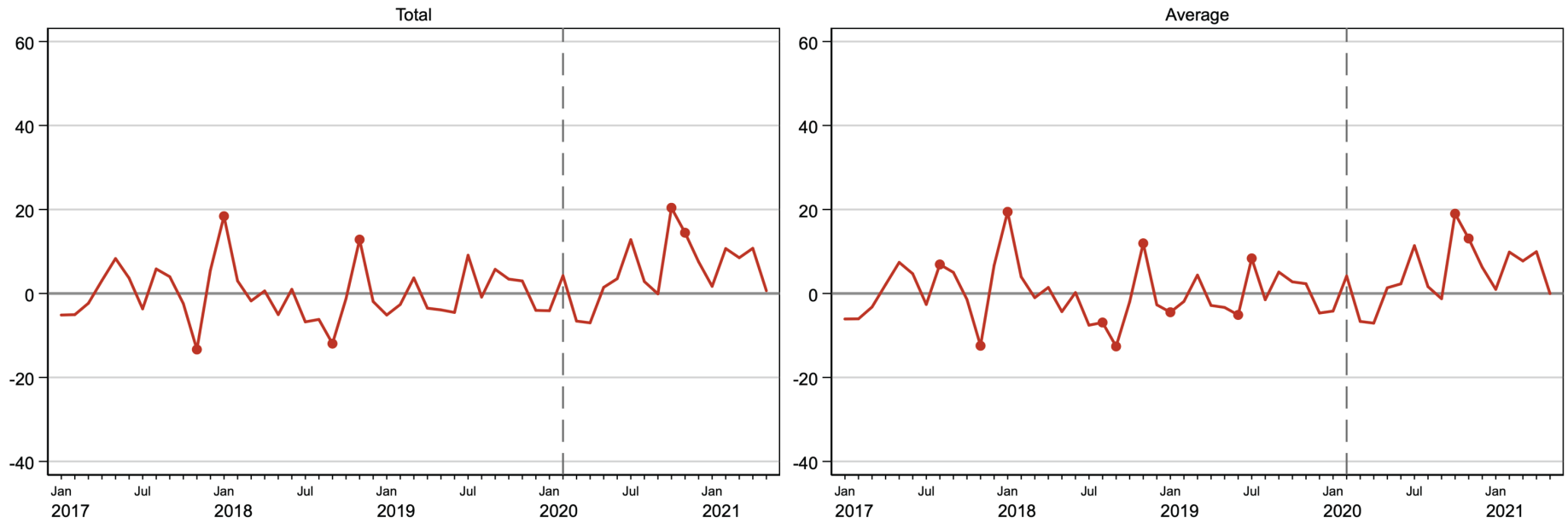
Kampala Metropolitan Area



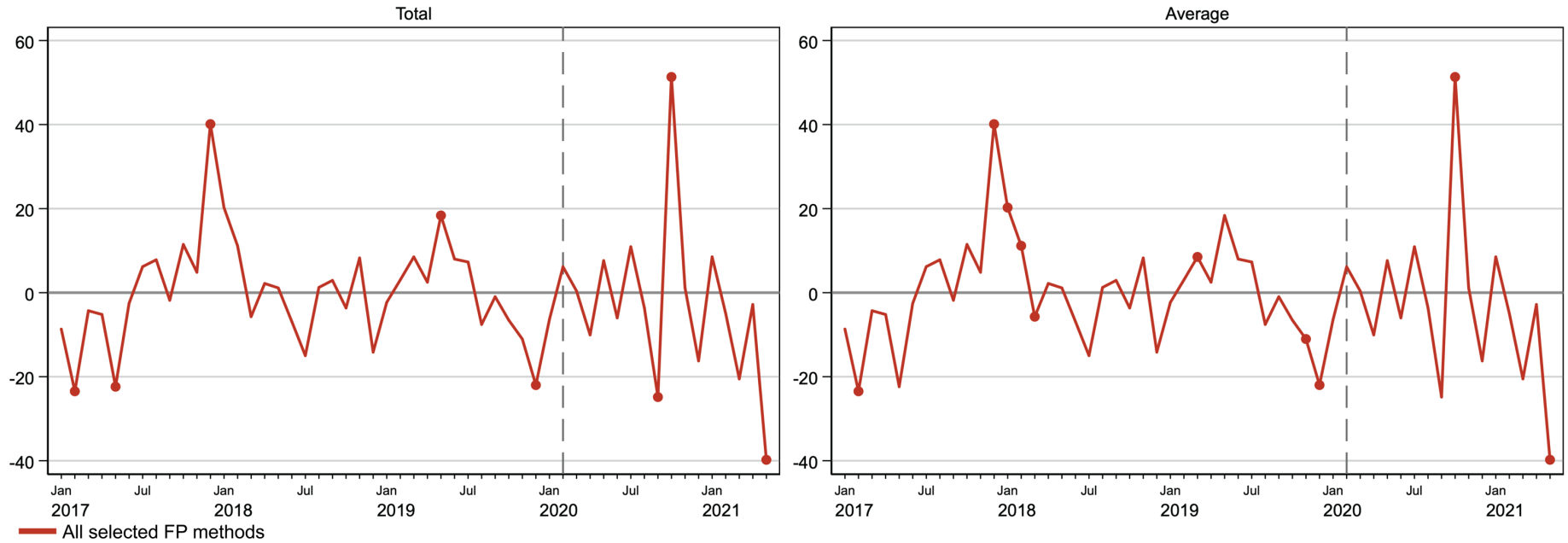
Solid circles in the graphs indicate months where the observed value is significantly different from the predicted value at $p < 0.05$.

Kampala Metropolitan Area contains the following districts: Buikwe, Kampala, Luweero, Mpigi, Mukono, and Wakiso.

Figure S4. COVID effects: Percent difference gap between reported and predicted levels for family planning visits during 2017-2021 (all selected methods)
National

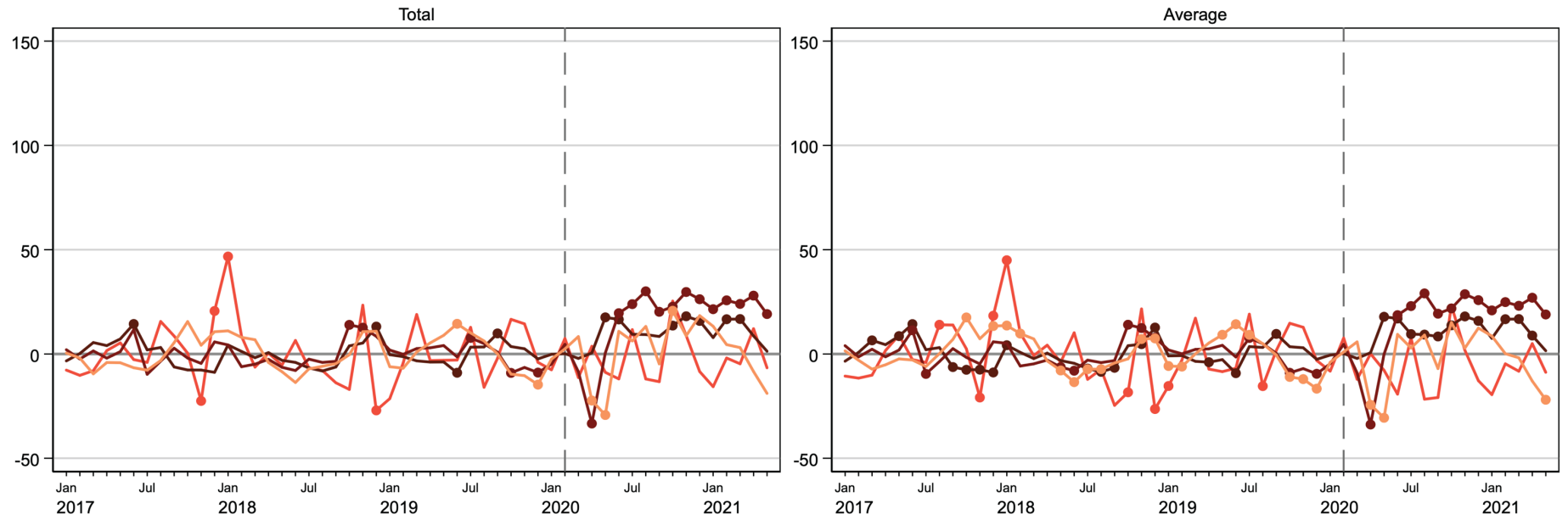


Kampala Metropolitan Area

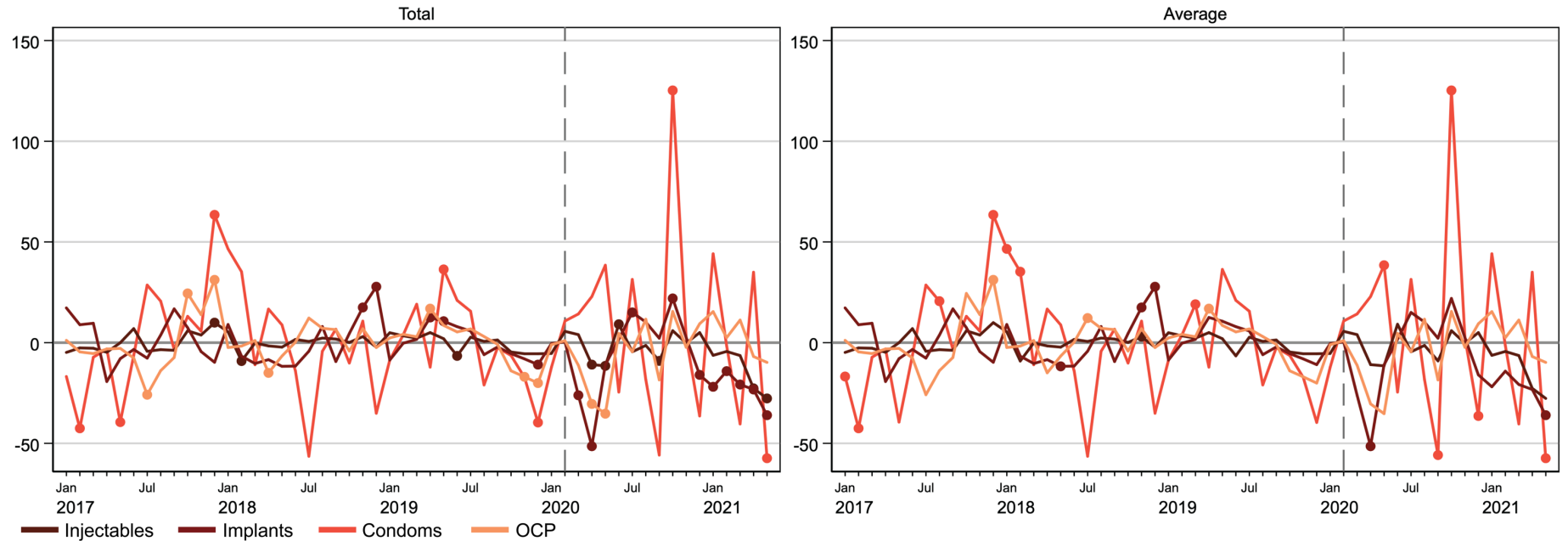


— All selected FP methods
Solid circles in the graphs indicate months where the observed value is significantly different from the predicted value at $p < 0.05$.
Kampala Metropolitan Area contains the following districts: Buikwe, Kampala, Luweero, Mpigi, Mukono, and Wakiso.

Figure S5. COVID effects: Percent difference gap between reported and predicted levels for family planning visits during 2017-2021 (by method)
National

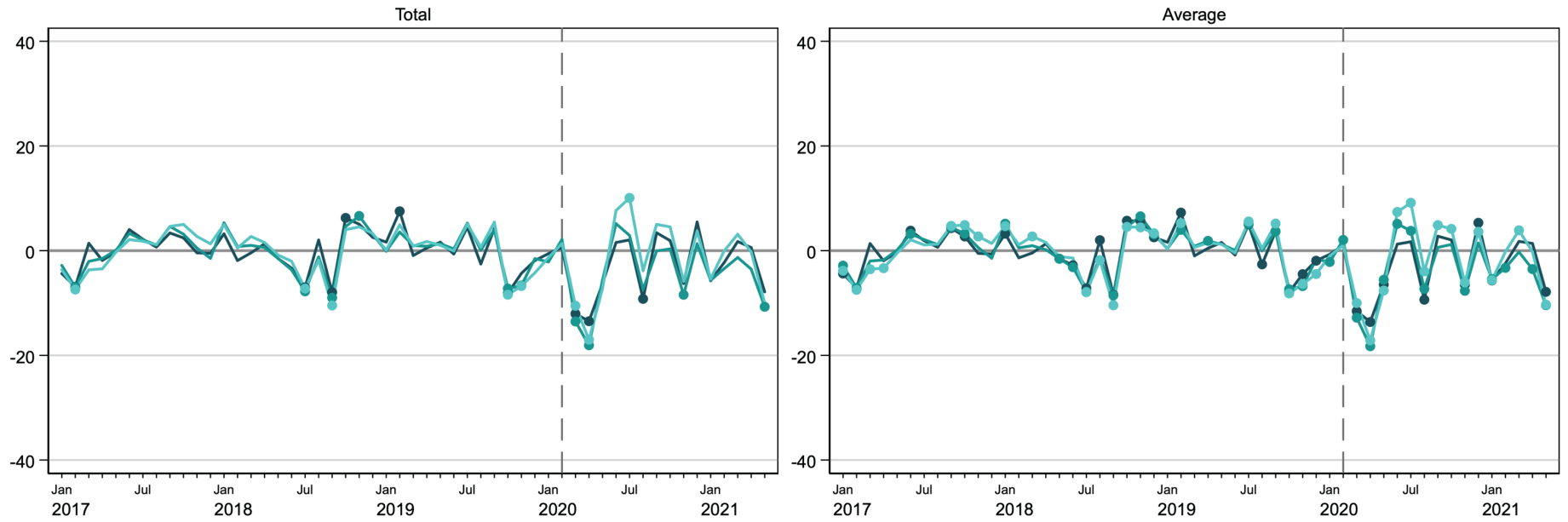


Kampala Metropolitan Area

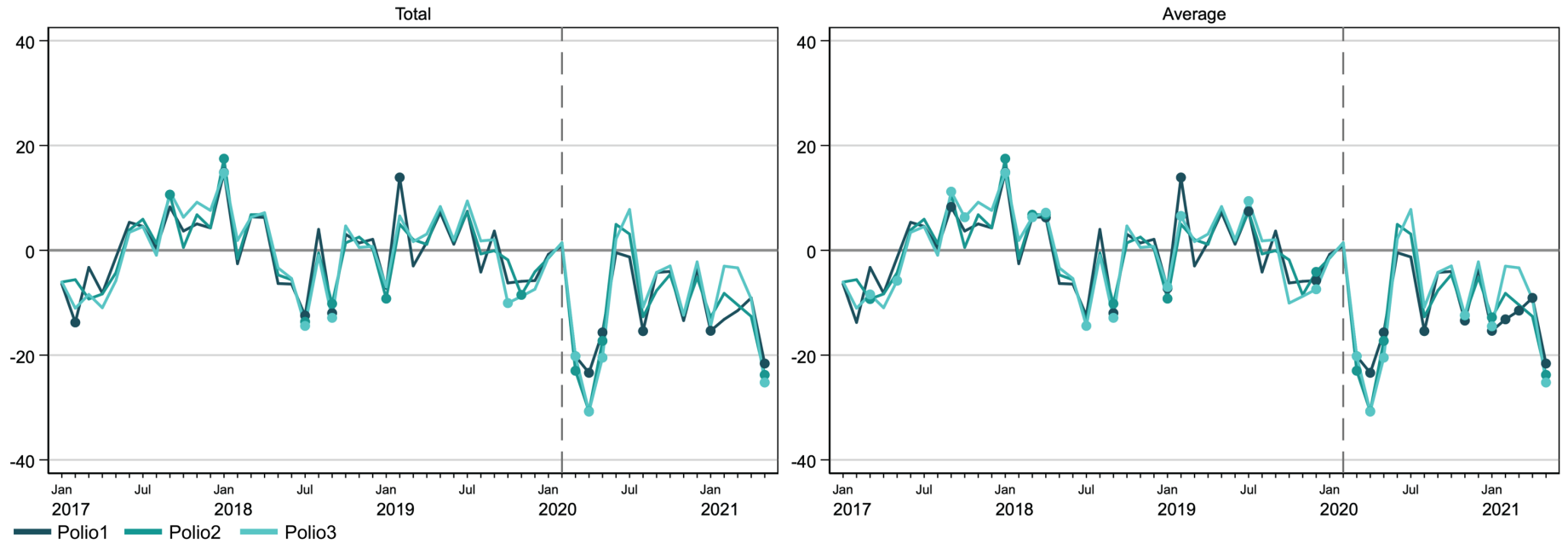


— Injectables — Implants — Condoms — OCP
Solid circles in the graphs indicate months where the observed value is significantly different from the predicted value at $p < 0.05$.
Kampala Metropolitan Area contains the following districts: Buikwe, Kampala, Luweero, Mpigi, Mukono, and Wakiso.

Figure S6. COVID effects: Percent difference gap between reported and predicted levels for polio vaccinations during 2017-2021
National

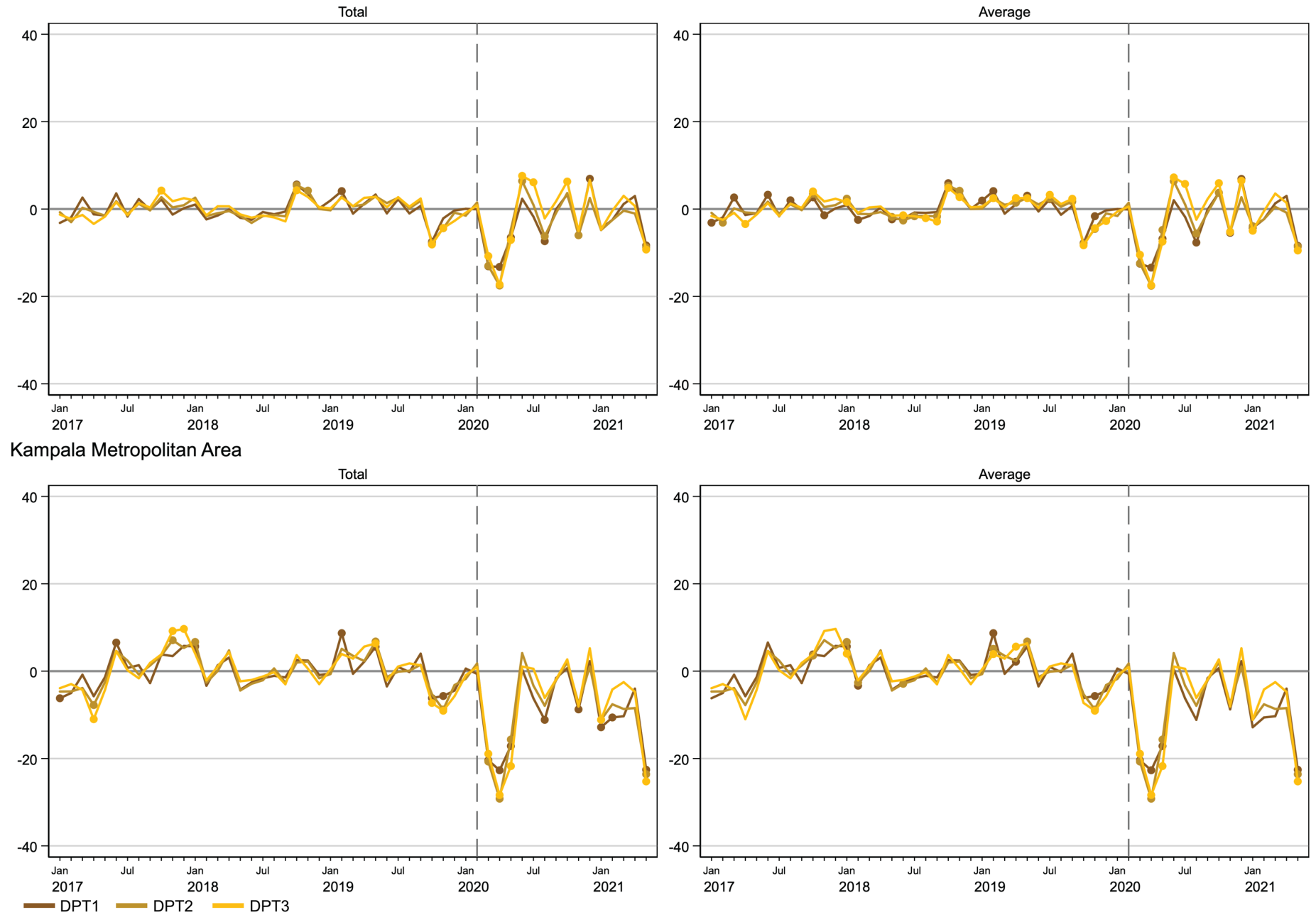


Kampala Metropolitan Area



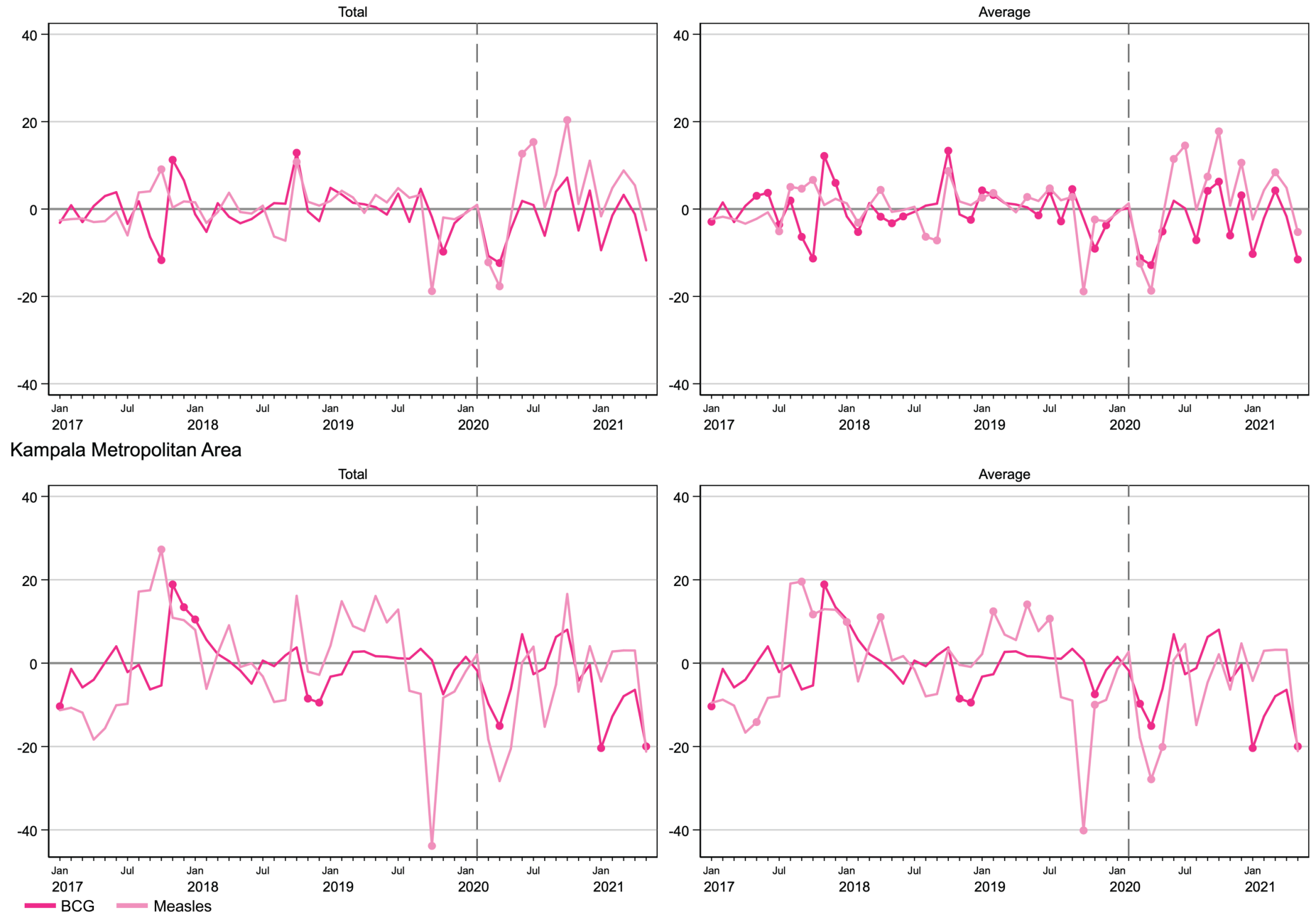
Solid circles in the graphs indicate months where the observed value is significantly different from the predicted value at $p < 0.05$.
Kampala Metropolitan Area contains the following districts: Buikwe, Kampala, Luweero, Mpigi, Mukono, and Wakiso.

Figure S7. COVID effects: Percent difference gap between reported and predicted levels for DPT vaccinations during 2017-2021 National



Solid circles in the graphs indicate months where the observed value is significantly different from the predicted value at $p < 0.05$.
 Kampala Metropolitan Area contains the following districts: Buikwe, Kampala, Luweero, Mpigi, Mukono, and Wakiso.

Figure S8. COVID effects: Percent difference gap between reported and predicted levels for BCG and measles vaccinations during 2017-2021 National



Solid circles in the graphs indicate months where the observed value is significantly different from the predicted value at $p < 0.05$.

Kampala Metropolitan Area contains the following districts: Buikwe, Kampala, Luweero, Mpigi, Mukono, and Wakiso.