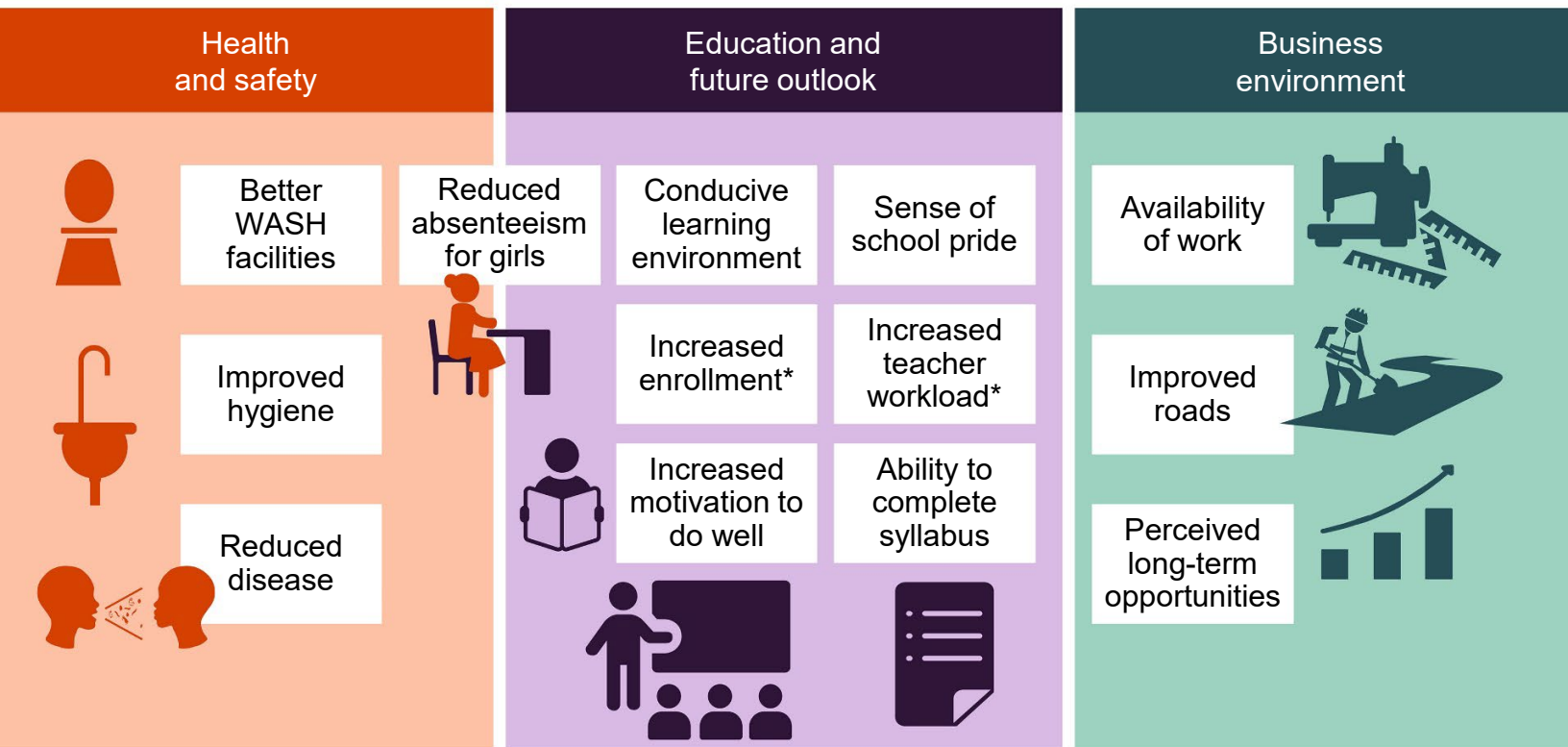


Malawi **SEED** Urban School Expansion

The Malawi Secondary Education Expansion for Development (SEED) activity worked to improve urban secondary school facilities, including new classroom blocks, boy and girl latrine blocks, and changing rooms for girls.



The graphic below represents the reported impacts of Malawi SEED school expansion for surrounding urban communities.




* These represent unintended results of urban school expansion.

Malawi **SEED** Impact Evaluation: Urban Qualitative Findings

Data for Impact (D4I) along with the Center for Social Research (CSR) collected qualitative data as part of a mixed methods evaluation of the Malawi Secondary Education Expansion for Development (SEED) activity. To better understand the impacts of urban school expansion on surrounding communities, we collected qualitative data from Form 1 students, caregivers and teachers of Form 1 students, and community leaders at SEED-expanded schools in Mzuzu, Blantyre, and Lilongwe. Data were audio recorded, transcribed, coded, and summarized.

RESPONDENTS	
12 focus groups with Form 1 students (13–17 years)	46 girls 48 boys
12 focus groups with caregivers (21–76 years)	38 women 34 men
24 in-depth and key informant interviews	12 Form 1 youth 6 Form 1 teachers 6 community leaders



Conducive learning environment



“Construction of this block has helped our children to be learning in spacious classrooms...children are having their classes comfortably and are happy. And if children are happy with their learning environment, they are motivated.”

– Female caregiver

Increased enrollment and motivation



“A beautiful school environment has a positive impact on my mindset towards my education and the goals that I want to achieve. Such a beautiful school shows that great things can be achieved here.”

– Form 1 male student

Reduced absenteeism in girls



“The change rooms which are menstrual hygiene-friendly have contributed enormously to the menstrual hygiene of girls which enables them to have dignified lives and not miss classes.”

– Form 1 female student

Reduced disease and improved hygiene



“The expansion has helped us a lot, because we were able to split the students into different classrooms which were also spacious and that made us to observe social distance. And we had handwashing facilities.”

– Female caregiver